



A CLOSER LOOK

AT THE EVIDENCE

Richard & Tina Kleiss

students who want to investigate the credibility of Christianity, and *teachers* who want to study the problems with evolution. Rich and Tina reside in Ocala, Florida.

ABOUT THE EDITOR/PUBLISHER

Bruce Malone worked as a Research Leader for the Dow Chemical Co. for 27 years specializing in new product developments. Mr. Malone has a B.S. in Chemical Engineering and holds 18 patents on various aspects of foam extrusion and polymer technology. However, his passion is writing and teaching about the evidence for creation. Bruce is interested in every aspect of science and has been studying, lecturing, and writing on the harmony of the evidence for creation with science for over 30 years. Bruce lives in Midland, Michigan with his wife Robin. They have 4 grown children and 4 grandchildren.

In 2008, Bruce took early retirement from Dow Chemical in order to serve as full time executive director of Search for the Truth Ministries. Search for the Truth is a non-profit 501(c)(3) organization started to distribute interesting and technically accurate books on creation to students, teachers, prisoners, pastors, and missionaries. Naturalistic evolutionary presuppositions have a lock upon our education system, museum system, and media but the courts have yet to prevent the free distribution of technically accurate and fascinating books on the evidence for creation. Our goal is to circumvent the censorship which is happening within our schools by distributing books on the evidence for creation over the next ten years.

JANUARY

WHICH CAME FIRST, THE CHICKEN OR THE EGG?

WHICH CAME FIRST, THE CHICKEN OR THE EGG?
THIS QUESTION WE MUST POSE.
THE ANSWER RESTS UPON GOD'S WORD
AND WHAT THE EVIDENCE SHOWS.

EVOLUTION SAYS IT WAS THE EGG;
PURE CHANCE BROUGHT US THE BIRD.
THE BIBLE SAYS GOD MADE THE BIRDS
IN GENESIS ONE OF HIS WORD.

THESE VIEWS WE KNOW CAN'T BOTH BE TRUE,
NO MATTER WHAT MEN SAY.
SO WE MUST LAY OUT ALL THE FACTS,
AND LET THEM POINT THE WAY.

IF WE LOOK CLOSELY AT WHAT'S FOUND
IN FOSSILS, STARS, AND CELLS,
THEY POINT OUT THERE'S A MASTER MIND;
AND HE DESIGNED THEM WELL.

OF COURSE, MANKIND JUST LAUGHS AT THIS.
THEY WON'T ADMIT IT'S TRUE.
THEY KNOW THAT IF THERE IS A GOD,
ACCOUNTS TO HIM ARE DUE.

AS CHRISTIANS, HERE'S WHERE WE CAN'T FAIL
TO KNOW GOD'S WORLD AND WORD.
OUR REASONS FOR BELIEF IN HIM
BY NO MEANS ARE ABSURD.

THE BIBLE SAYS TO SEEK OUT TRUTH;
FOUNDATIONS MUST BE STRONG.
SO WHEN MEN SAY THEY HAVE THE FACTS,
WE'LL KNOW WHAT'S RIGHT FROM WRONG.

LET'S READ GOD'S WORD, APPLY OUR MINDS,
AND SEEK HIM WITH ALL OUR HEART.
GOD SAID HE'D TEACH US WONDROUS THINGS
AND TRUTH TO US IMPART.

SO WHEN WE'RE ASKED TO CLARIFY
THAT EGGS WEREN'T FIRST AND WHY,
WE'LL KNOW GOD'S SCRIPT, POINT TO THE FACTS,
AND HAVE A SOUND REPLY.

IF WE CAN SPUR MAN TO RETHINK
HIS VIEWS ON EVOLUTION,
PERHAPS HE'LL SEE THE FACTS SHOW GOD
AS THE CORRECT SOLUTION.

CHRISTIAN TRUTH

JANUARY 1

True Christianity, as set forth in the Bible, is a credible faith and not one based on emotions, superstitions, or groundless belief. Christianity is founded on truth that can be tested and is for the thinking person. God does not ask us to check our brains at the church door. Followers of other religions can quote their texts and give glowing testimonies of how their religions make them feel, but their beliefs are based on feelings, rather than historical facts. It is quite possible to be devoted and sincere about a religious belief, while whole-heartedly believing a lie. How can a person know that what they believe is actually true? Although some beliefs can bring comfort, will they ultimately help or harm us if they are false?

Christianity alone is based on verifiable historical truth. The Bible states in Romans 1:20 that no one has any excuse for disbelief in the one true God, because God clearly makes Himself known to everyone through what He has made (His creation). This can be verified through the study of creation using the tool of science.

God also makes Himself known through His Word, the Bible. He challenges us to examine and test it. Each person is responsible to investigate the Bible's claims of authenticity. Our eternal destiny depends upon it.

"...ALWAYS BE PREPARED TO GIVE AN ANSWER TO EVERYONE WHO ASKS YOU TO GIVE THE REASON FOR THE HOPE THAT YOU HAVE. BUT DO THIS WITH GENTLENESS AND RESPECT."

1 PETER 3:15

BIOLOGY

JANUARY 2

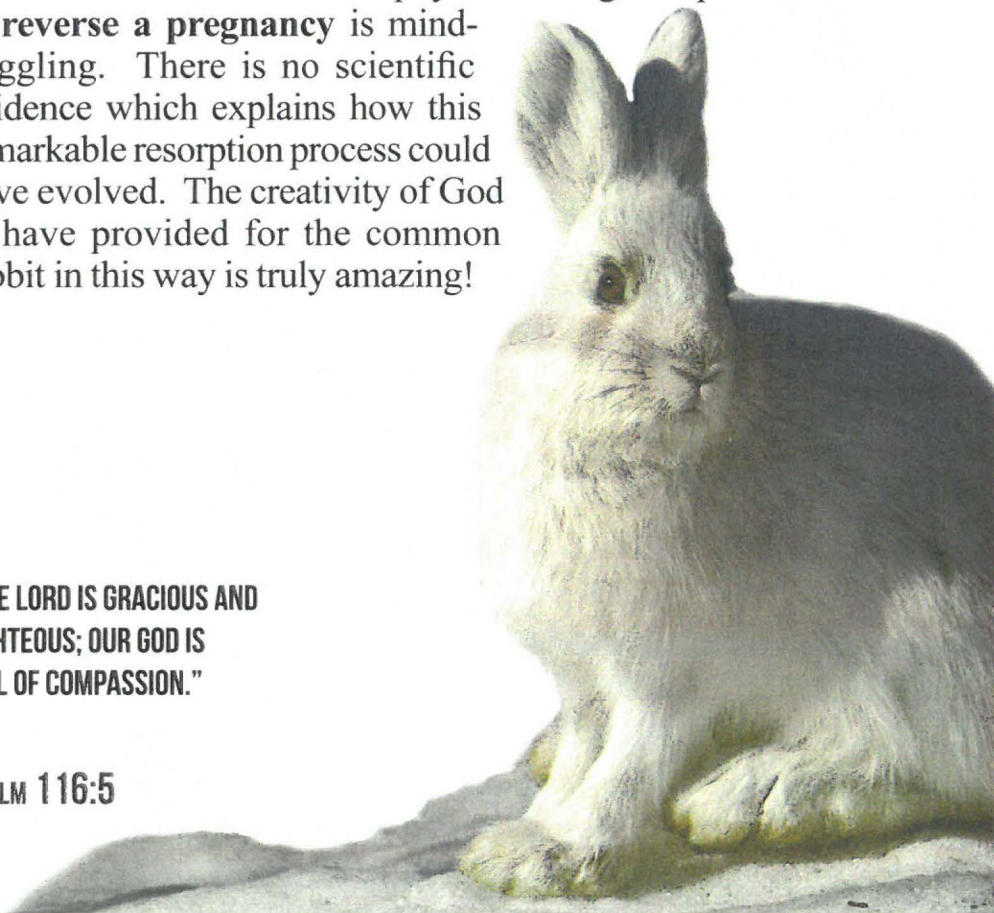
Although the original world was created perfect and without death, our fallen world requires creatures to adapt to difficult situations in order to survive. Even in the current world full of death and competition, the smallest of creatures exhibit amazing capabilities for survival in harsh environments. The female snowshoe rabbit is one such creature.

During extreme drought or harsh winters, the stress of finding food triggers a chemical process in the pregnant female that stops an embryo's growth. Her body then responds to this condition of physical weakness with a process called resorption. In this process, **the mother completely reabsorbs the growing embryo.** This mechanism allows the rabbit to survive by replenishing her own strength. She can later become pregnant during more favorable conditions.

The number of chemical and physical changes required for a rabbit to **reverse a pregnancy** is mind-boggling. There is no scientific evidence which explains how this remarkable resorption process could have evolved. The creativity of God to have provided for the common rabbit in this way is truly amazing!

**"THE LORD IS GRACIOUS AND
RIGHTEOUS; OUR GOD IS
FULL OF COMPASSION."**

PSALM 116:5



PROPHECY

JANUARY 3

The prophet Ezekiel prophesied that the city of Sidon, twenty miles north of Tyre, would have a miserable and bloody future due to its horrible sinfulness. A study of history shows that this prophecy (precise future events foreseen and predicted) came true exactly as predicted.

Throughout the centuries, Sidon has indeed been one of the bloodiest locations in history. Soon after the prophecy was given, the city was captured by the Babylonians. Later, over 40,000 died in a rebellion against the Persians. The Greeks then captured it under Alexander the Great in 330 B.C. It continued to be the scene of many fierce battles during the Crusades and various Turkish wars. Today, this city is part of Lebanon, only twenty miles south of Beirut. **This area seems destined to continue its unhappy history (indefinitely), just as the Bible predicted over 2,000 years ago.**

As much as one-fourth of the Bible consists of prophetic statements. **Every single prediction has come or is in the process of coming true—with 100% accuracy.** This is true because the Bible is inspired by the Holy Spirit (who is God). Only God is outside of time and capable of seeing all of time, from the moment of creation until He wraps up history, in advance. This is possible as time is part of the physical universe and God (who created the entire universe) is outside of time. Only the Bible validates itself by predicting the specific future events in advance!

“...I AM AGAINST YOU, O SIDON...I WILL SEND A PLAGUE UPON HER AND MAKE BLOOD FLOW IN HER STREETS. THE SLAIN WILL FALL WITHIN HER, WITH THE SWORD AGAINST HER ON EVERY SIDE...”

EZEKIEL 28:22,23

BOTANY

JANUARY 4

On a hot summer day, one large tree can pump over a thousand gallons—that's four tons—of water from the ground to its leaves. The water is collected from the soil through the roots. But the real work of pumping four tons of water, often 100 feet into the air, occurs at the top of the tree. The water is suctioned toward the treetop by three remarkably efficient mechanisms—capillary flow, osmosis, and vacuum pressure. Osmosis and capillary action act in concert to move the water partway to the top of the tree, but the real driving force is a pressure differential created by the leaves within the vessels of the tree. This pressure differential is a result of water evaporating from the leaves of the tree, creating a suction throughout the vessels. This suction (measured as low as 1/20 of atmospheric pressure) helps to draw water from the roots all the way to the top of the tree. If you were to cut one of these vessels, you could actually hear (using extremely sensitive equipment) a hissing sound as air rushed back into these vessels.

The **engineering excellence** of this silent pumping system, which efficiently delivers moisture to the very top of trees, is a not-so-silent witness against the idea that chance evolutionary processes (such as mutations) could have developed it.

“DO YOU NOT KNOW? HAVE YOU NOT HEARD? THE LORD IS THE EVERLASTING GOD, THE CREATOR OF THE ENDS OF THE EARTH. HE WILL NOT GROW TIRED OR WEARY, AND HIS UNDERSTANDING NO ONE CAN FATHOM.”

ISAIAH 40:28



MICROBIOLOGY

JANUARY 5

The existence of life depends upon a substance which chemists call the universal solvent. This magnificent molecule, with its many unique properties, is ordinary water. Unlike almost all other liquids which contract upon changing from liquid to solid, water stops contracting and starts expanding at 4°C. This results in solid water (ice) being less dense (lighter) than liquid water. Thus lakes and rivers freeze from the top down instead of from the bottom up. **If lakes froze from the bottom up, life within every lake in a freezing climate would be destroyed.**

Water also has a unique ability to conduct electricity at just the right resistance to make the processes of life possible within cells. In addition, its unique surface tension insulates some animals, while its inability to mix with body oils insulates other animals by keeping them dry. Water is only one of the special substances that God created to enhance and enable life.

From the properties of the smallest molecule to the complex interrelated systems of life, the entire universe has every appearance of being designed to work together in **perfect harmony**. This is one of many ways in which creation provides a vivid testimony to our Creator's attention to the details of life.



**"COME AND SEE WHAT GOD HAS DONE,
HOW AWESOME HIS WORKS IN MAN'S BEHALF!"**

PSALM 66:5

BIOLOGY

JANUARY 6

The Couch's spadefoot toad of the Sonoran Desert is an example of how God takes care of creatures under extreme conditions. **This toad lies dormant in the hot desert eleven out of twelve months each year.** It has built-in sensors that tell it when a violent desert rainstorm occurs. The toad can detect vibrations of pounding rain miles away. It somehow knows to emerge from the sand when it rains so that the male toads can call for females as soon as pools of water form. Shortly afterwards the egg-laying is completed and the toads return to the sand, safe from the heat of the burning daytime sun. Most of the time the desert pools rapidly dry up, killing the eggs. Only under ideal conditions will some of the eggs hatch—nine days later. The young toads have at



most a few weeks to eat enough food to survive before burying themselves in the sand for the next eleven months while awaiting another rainstorm.

Such survival instincts and mechanisms were probably not required before the Fall, when the world was designed as a paradise. In the current world, with its severe climates, such instincts and abilities seem to have been specifically designed for animals such as the spadefoot toad. How could this ability to adjust to such harsh weather conditions have evolved? **Unless all of the abilities, instincts, and timing of the toads' reproductive cycle were in place, the toads could never have survived the first severe season.**

**"THE WILD ANIMALS HONOR ME...BECAUSE I PROVIDE WATER
IN THE DESERT AND STREAMS IN THE WASTELAND..."**

ISAIAH 43:20

ANATOMY

JANUARY 7

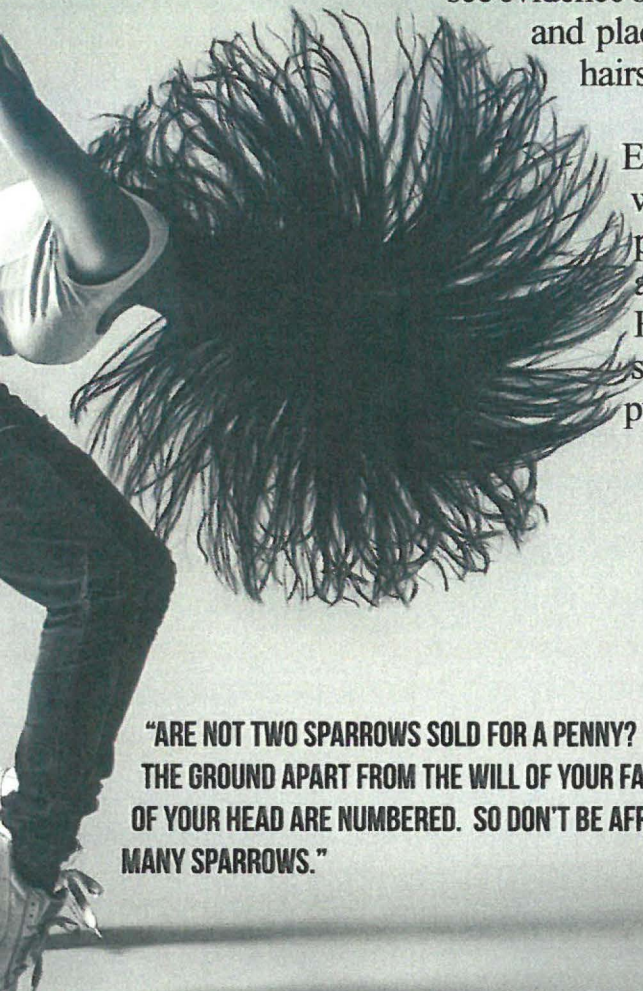
Human hair is actually a complex functioning feature, not just a simple cosmetic addition to our bodies. Not only does hair provide warmth and enhanced appearance, but it has multiple design functions to enhance life. For instance, **hair is an integral part of the body's protection system.** Eyelashes protect our eyes by triggering them to almost instantly and involuntarily close when dust strikes the lashes. Body hair serves as tiny levers. Each hair is connected to a muscle which squeezes oil from adjacent glands that keep our skin from drying out. Hair even acts as a filter for particulates caught in the nose and ears.

Hair is also “programmed” to grow to specific lengths and thicknesses in various places on the body. Eyelashes, for example, do not grow as long or thick as scalp hair. They grow to a certain length, fall out, and are replaced by new hair. Who planned it this way? Clearly, one can see evidence of design in both the function and placement of even the simple hairs on our bodies.

Evolution does not explain where the complex programming to create even a single hair came from. Human hair is not a leftover skin covering from our purported “ape ancestry.”

“ARE NOT TWO SPARROWS SOLD FOR A PENNY? YET NOT ONE OF THEM WILL FALL TO THE GROUND APART FROM THE WILL OF YOUR FATHER. AND EVEN THE VERY HAIRS OF YOUR HEAD ARE NUMBERED. SO DON'T BE AFRAID; YOU ARE WORTH MORE THAN MANY SPARROWS.”

MATTHEW 10:29-31



FOSSIL RECORD

JANUARY 8

We are repeatedly told that dinosaurs died out around 60 million years ago. **Yet there have been many reports of dinosaur bones which have been dated quite young.** Carbon-14 (^{14}C) analysis of dinosaur bones reveals that they can contain measurable amounts of ^{14}C . This is impossible if the bones are over 60 million years old but makes perfect sense from a biblical perspective. The ^{14}C concentration for organisms alive before Noah's Flood would have been greatly reduced compared to modern levels, but ^{14}C should still be present in small amounts. This is exactly what we find and does not indicate a great age but a recent burial by a worldwide flood.

According to the March 1992 ABR Newsletter, Hugh Miller of Columbus, Ohio had four dinosaur bone samples carbon dated at a university laboratory. Each of the bones were "dated" at an age of under 20,000 years. These bones were not identified as dinosaur bones because the labs would not agree to test bones which their evolutionary presumptions tell them could not contain any ^{14}C . Yet the same level of ^{14}C found in the bones of a more "recent" creature would be assumed to be correct.

In an even more amazing discovery, both DNA fragments and unfossilized red blood cells have been found within dinosaur bones. Neither of these fragile organic molecules could exist after millions of years. Yet it is quite reasonable to expect to find such fragments to remain if they were buried during Noah's Flood—less than 5,000 years ago.


Recent dates on dinosaur bones should be no surprise to Christians. In Genesis 1:21 God says he created "great whales" (KJV). Elsewhere this Hebrew word, tannin, is translated "dragon." Job chapters 40 and 41 describe powerful creatures which could only be dinosaurs.

PROPHECY

JANUARY 9

There are over 300 distinct prophecies in the Old Testament that were literally fulfilled by Jesus Christ. These prophecies, given hundreds of years before Christ was born, were very specific and could not be fulfilled by any other man in history. The prophecies include the time, place, and manner of Christ's birth, including specifics about His ministry and genealogy. Also predicted were details about His miracles, His trial, His death, His resurrection, and the events after His resurrection.

The probability of all of these prophecies being fulfilled by any other person is an absolute impossibility.




These predictions concerning the life of Jesus Christ were recorded in the sacred books of the Jewish people—now commonly known as the “Old Testament.” Copies of these ancient documents, identical to the modern texts, were buried hundreds of years before the birth of Christ. They were found sealed in clay jars near the Dead Sea in Israel. These “Dead Sea Scrolls” and other manuscripts recorded specific details about Jesus long before they actually occurred. Only a Creator God who is outside of time could have inspired these hundreds of specific details to be written down prior to their fulfillment.

“...SURELY, JUST AS I HAVE INTENDED SO IT HAS HAPPENED,
AND JUST AS I HAVE PLANNED SO IT WILL STAND.”

ISAIAH 14:24 NAS

BIOLOGY

JANUARY 10

A photograph of a gazelle standing in a field of tall, golden-brown grass. The gazelle is facing the camera, looking slightly to the left. It has light brown fur and two long, spiraling horns. The background is a soft-focus landscape with more grass and a hint of a horizon line under a pale sky.

Human engineers did not design the first cooling system. Every living warm-blooded creature has mechanisms for controlling its body temperature. **The design of the gazelle’s cooling system is among the most ingenious in nature.** The gazelle must run at high speed in order to escape predators. This exertion of energy raises the gazelle’s body temperature to such an extent that for the gazelle to survive, its brain must be cooled. The solution to this problem is a special cooling system built right into the gazelle’s head. Gazelles and similar animals have hundreds of small arteries that pass through a large pool of blood in the nasal passage. Inhaled air cools this nasal blood pool, which in turn cools the blood in the tiny arteries passing through the pool. [In industry, these specifically designed pieces of equipment are called heat exchangers.] After the blood has been cooled, it recombines in a larger blood vessel and circulates into the brain. Without this system for cooling the brain, the gazelle simply could not survive in the current fallen world which requires the gazelle to escape from predatory animals.

It takes a team of engineers using sophisticated calculations to design heat exchangers for use in industrial processes. Since it had to work perfectly from the outset, creation is the only logical explanation for the design and function of the gazelle’s far more intricate heat exchange system.

“...WHO IS LIKE YOU—MAJESTIC IN HOLINESS, AWESOME IN GLORY, WORKING WONDERS?”

Exodus 15:11